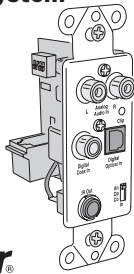




**Multi-Room Audio Distribution System**

**ENC-SIWP Source Input Wall Plate Installation Instructions**



USA & Canada (800) 421-1587 & (800) 392-0123  
 (760) 438-7000 - Toll Free FAX (800) 468-1340  
 www.linearcorp.com

**1. PRODUCT DESCRIPTION**

The Encore source input wall plate (Model ENC-SIWP) serves as a primary audio source input for the Encore Multi-Room Audio Distribution System. It provides a connection point for components such as receivers, tuners, CD players, and computers. A high quality analog-to-digital converter encodes analog sources to digital audio and distributes it to the system.

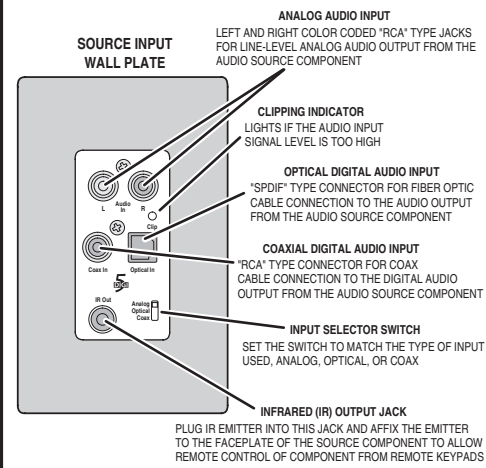
The wall plate wires directly to the hub with Cat-5 cable and mounts in a J-box. Up to four source input wall plates can be used with each system. At each speaker zone, the keypad (Model ENC-DRS) selects between up to four audio sources connected to source input wall plates or from an audio source connected to a local input wall plate (Model ENC-LIWP) wired to the keypad.

The wall plate features a stereo analog audio input, a coaxial digital audio input, and optical digital audio input. The input selector switch selects between the three audio inputs.

A set of gain switches is provided to boost low level signals by +4, or +8 db. The clipping indicator will light if the signal level is too high.

The system features infrared (IR) remote control. An IR repeater system monitors IR received at each keypad and repeats the remote control signals to the audio source components through IR emitters connected to the wall plate's IR OUT jack. IR emitters are sold in a 4-pack as Model 2171-4.

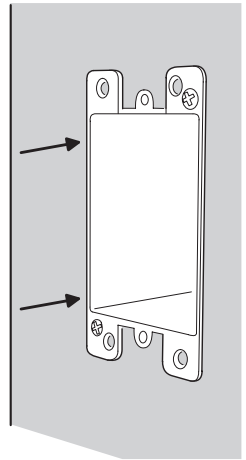
**2. WALL PLATE FEATURES**



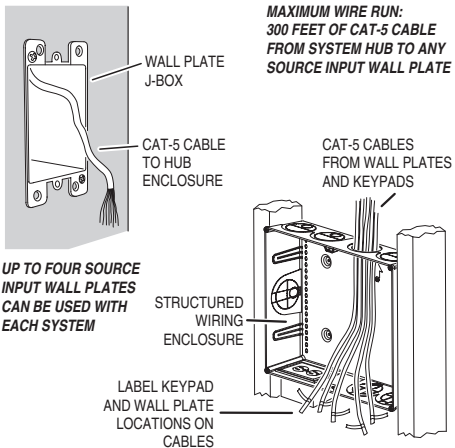
**3. INSTALL JUNCTION BOX**

INSTALL A SINGLE-GANG OR MULTI-GANG JUNCTION BOX AT A GOOD LOCATION FOR THE AUDIO CONNECTION TO THE SOURCE COMPONENT

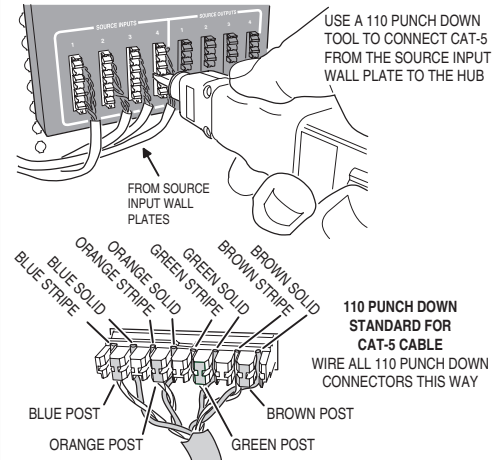
ALSO BE SURE THAT THE CABLE FROM THE HUB CAN BE EASILY ROUTED TO THE JUNCTION BOX



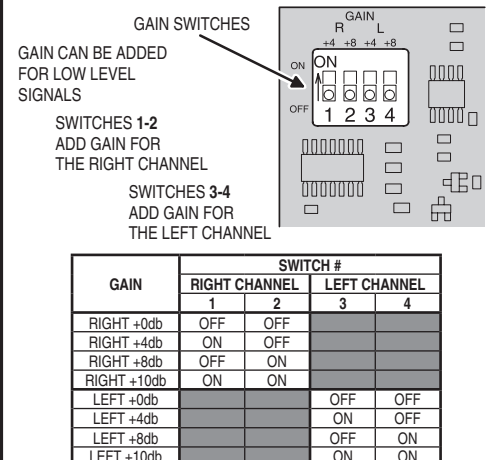
**4. ROUTE CAT-5 CABLE FOR WALL PLATE**



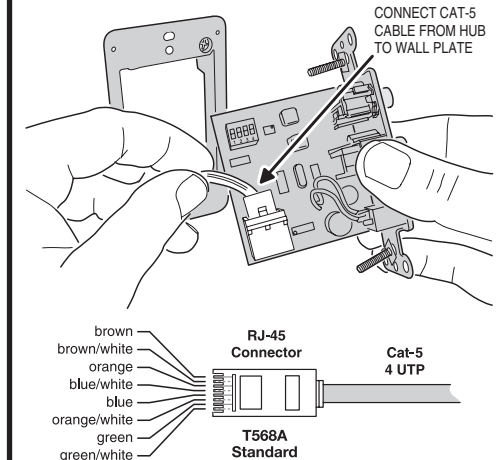
**5. PUNCH DOWN CABLE AT HUB**



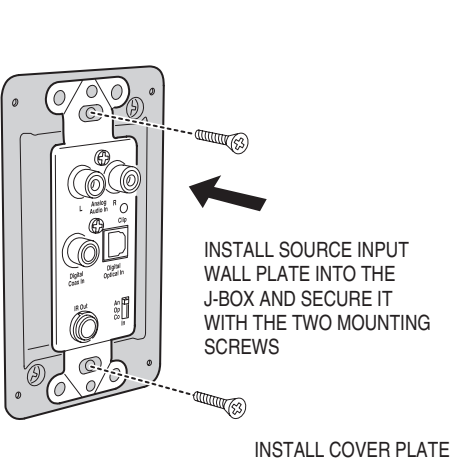
**6. SET GAIN SWITCHES (OPTIONAL)**



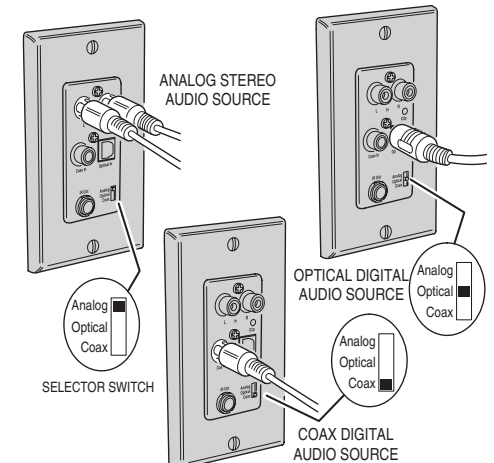
**7. CONNECT CABLE TO WALL PLATE**



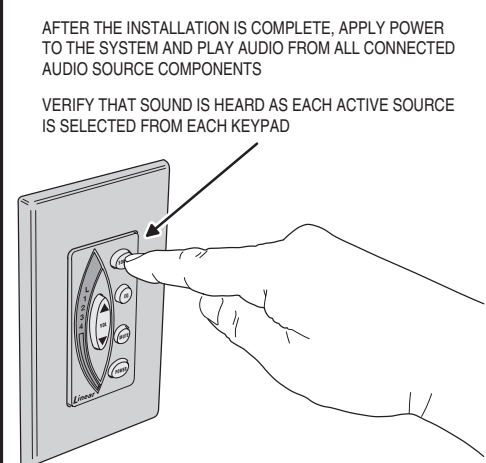
**8. INSTALL WALL PLATE**



**9. CONNECT AUDIO SOURCE**



**10. POWER UP AND TEST**



**LIMITED WARRANTY**

This Linear product is warranted against defects in material and workmanship for twenty four (24) months. **This warranty extends only to wholesale customers** who buy direct from Linear or through Linear's normal distribution channels. **Linear does not warrant this product to consumers.** Consumers should inquire from their selling dealer as to the nature of the dealer's warranty, if any. **There are no obligations or liabilities on the part of Linear LLC for consequential damages arising out of or in connection with use or performance of this product or other indirect damages with respect to loss of property, revenue, or profit, or cost of removal, installation, or reinstallation.** All implied warranties, including implied warranties for merchantability and implied warranties for fitness, are valid only until the warranty expires. **This Linear LLC Warranty is in lieu of all other warranties express or implied.** All products returned for warranty service require a Return Product Authorization Number (RPA#). Contact Linear Technical Service at 1-800-421-1587 for an RPA# and other important details.